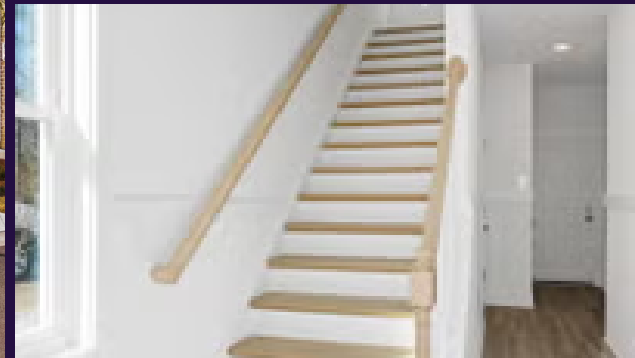




FLOOR PLAN - WILMINGTON, NC

Tilley

Built in Anchors Bend Townes · 1 home available now



STARTING FROM

\$549,990

2

BED

2.5

BATH

1,917

SQ FT

1

GARAGE

PLAN DETAILS

COMMUNITY	Anchors Bend Townes
FLOORPLAN	Tilley
BEDROOMS	2
FULL BATHS	2
HALF BATHS	1
GARAGE	1 car
PRIMARY	Up

ABOUT THIS PLAN

The Tilley is McKee Homes brand new floor plan. This functionally designed townhome features elevator access to the 1,917 square foot homes with 2 bedrooms and 2.5 baths.

AVAILABLE ELEVATIONS



ELEVATION 1



SALES CONSULTANT

Kelly Batson

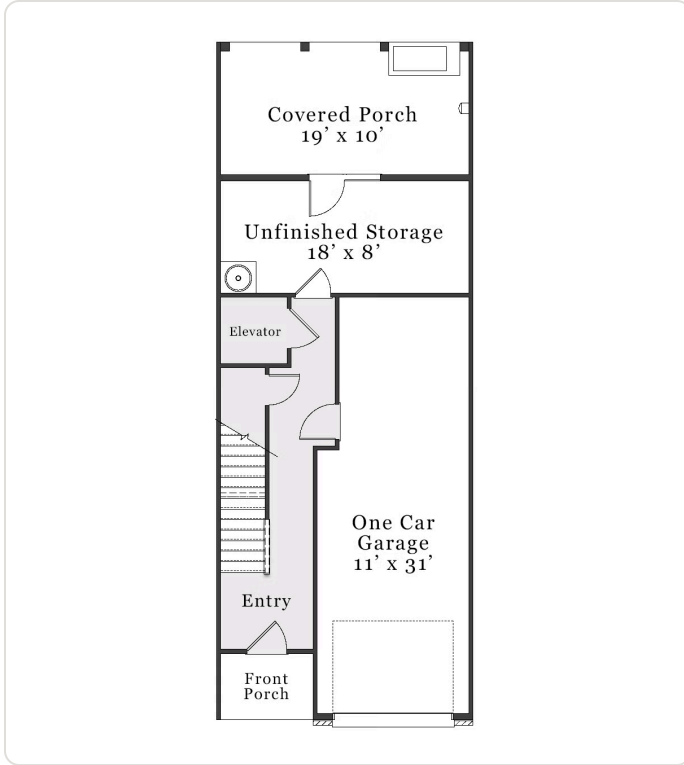
Phone: (910) 742-6337

Email:

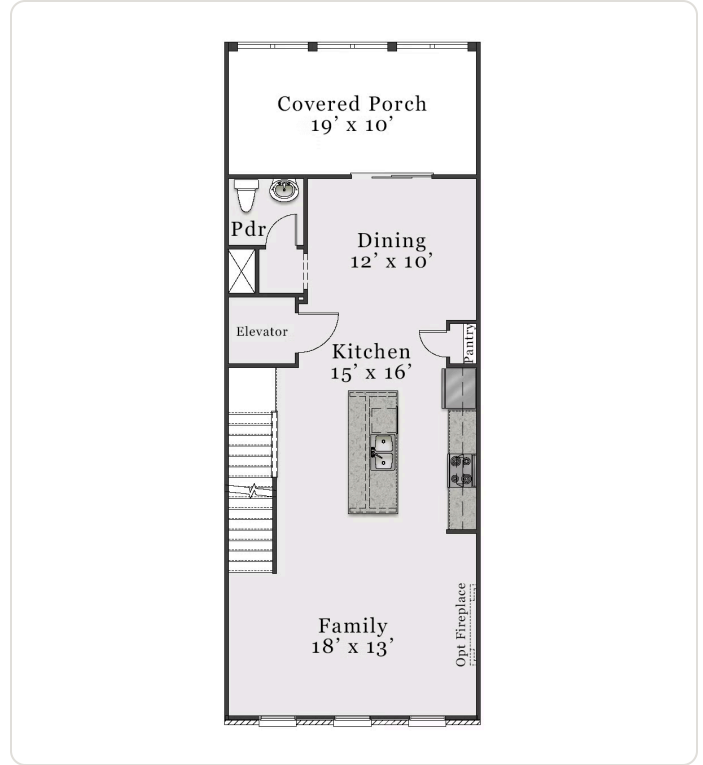
kelly.batson@landmarksothebysrealty.com

Plans and elevations are artist's renderings only and used for marketing purposes. Stated dimensions and square footage are approximate and should not be used as representation of the home's precise or actual size. McKee Homes reserves the right to make changes to these floor plans, specifications, dimensions, designs, features and elevations without prior notice. We may need to substitute equipment, materials and appliances with items of equal or higher value at our own discretion. Floor plans are the copyright protected property of McKee Homes. © 2026 McKee Homes. All rights reserved.

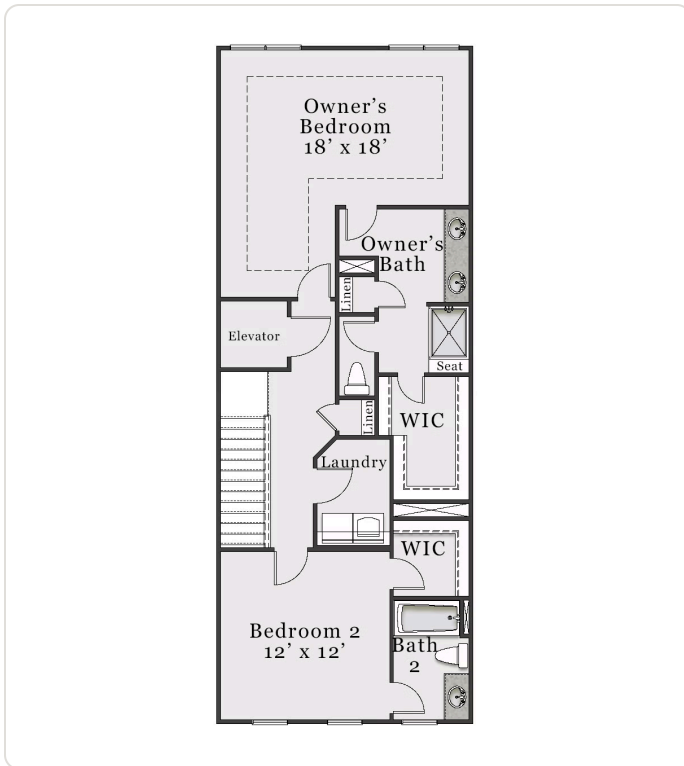




FIRST FLOOR



SECOND FLOOR



THIRD FLOOR