



FLOOR PLAN · WILMINGTON, NC

# Montague

Built in Anchors Bend Townes · 8 homes available now



STARTING FROM

**\$589,990**

**3**

BED

**2.5**

BATH

**2,222**

SQ FT

**2**

GARAGE

## PLAN DETAILS

<b>COMMUNITY</b>	Anchors Bend Townes
<b>FLOORPLAN</b>	Montague
<b>BEDROOMS</b>	3
<b>FULL BATHS</b>	2
<b>HALF BATHS</b>	1
<b>GARAGE</b>	2 car
<b>PRIMARY</b>	Up

## ABOUT THIS PLAN

Step into luxury coastal living with the stunning 2,222 square foot three-level townhome, a haven of serenity and comfort. Boasting three bedrooms, two and a half baths, and a large two-car garage, this well-crafted home is tucked away in the highly desirable Anchors Bend neighborhood. Ascend effortlessly through all three levels via your own private elevator, seamlessly connecting each well-designed space. The first level features a welcoming entryway and stairwell leading to The second floor that opens to a large and inviting living area with large windows letting in plenty of natural light. The upgraded kitchen and dining area lead to a large private screened in porch



SALES CONSULTANT

**Kelly Batson**

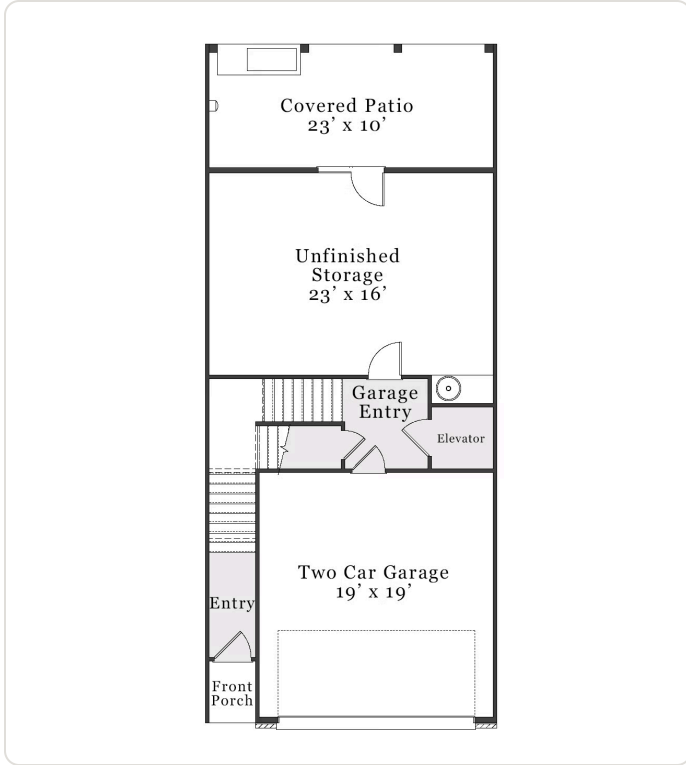
Phone: (910) 742-6337

Email:

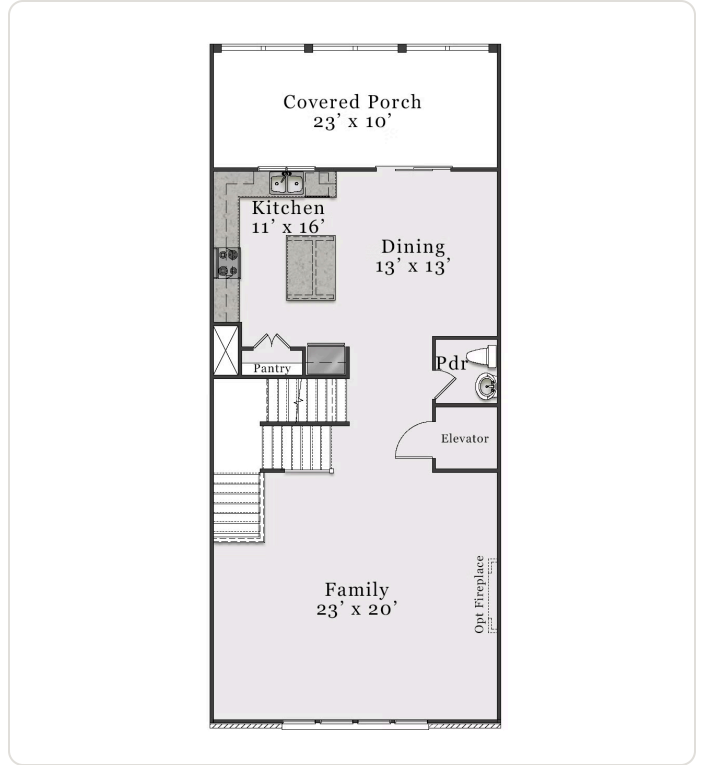
kelly.batson@landmarksothebysrealty.com

Plans and elevations are artist's renderings only and used for marketing purposes. Stated dimensions and square footage are approximate and should not be used as representation of the home's precise or actual size. McKee Homes reserves the right to make changes to these floor plans, specifications, dimensions, designs, features and elevations without prior notice. We may need to substitute equipment, materials and appliances with items of equal or higher value at our own discretion. Floor plans are the copyright protected property of McKee Homes. © 2026 McKee Homes. All rights reserved.

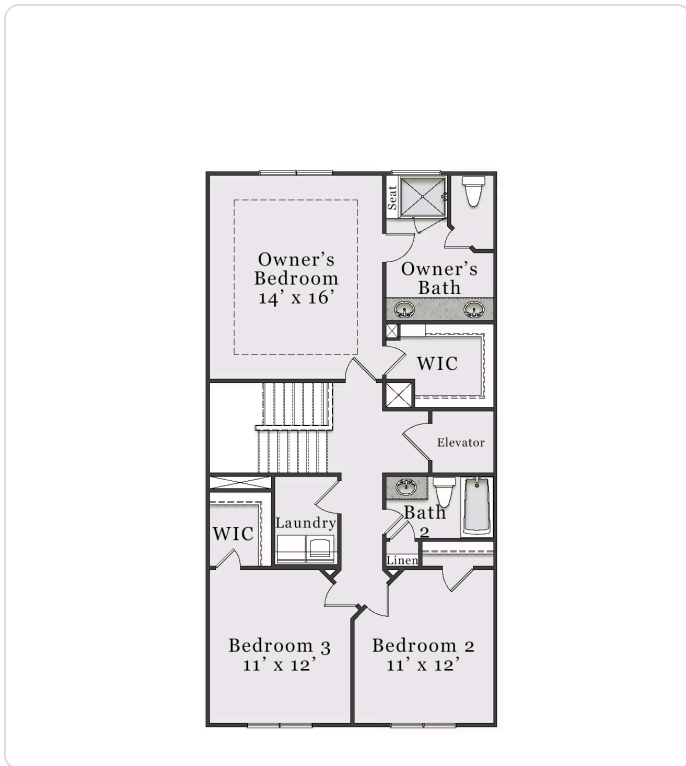




FIRST FLOOR



SECOND FLOOR



THIRD FLOOR