



FLOOR PLAN · RAEFORD, NC

Metcalf

Built in Bedford · 1 home available now



STARTING FROM

\$294,990

3

BED

2.5

BATH

1,788

SQ FT

1

GARAGE

PLAN DETAILS

COMMUNITY	Bedford
FLOORPLAN	Metcalf
BEDROOMS	3
FULL BATHS	2
HALF BATHS	1
GARAGE	1 car
PRIMARY	Up

AVAILABLE ELEVATIONS



ABOUT THIS PLAN

As you enter the Metcalf 3 bedroom, 2 1/2 bath floor plan through the open foyer, you are greeted with spacious dining and family rooms ready for entertaining. The thoughtfully laid-out kitchen with plenty of cabinet space and a large chef's island along with a powder room and garage finish out the first floor.

The owner's suite and two additional bedrooms are easily accessed from the open area at the top of the stairs. The owner's suite features a sizable bathroom with dual-sink vanity, shower, and separate water closet as well as a spacious walk-in closet. The laundry room is conveniently located for easy access to bedrooms and guest bath. Options include additional windows in the secondary bedrooms as well as converting the rear patio/deck into a covered or screened porch. There is also a storage room option with window off the front porch for additional storage.



SALES CONSULTANT

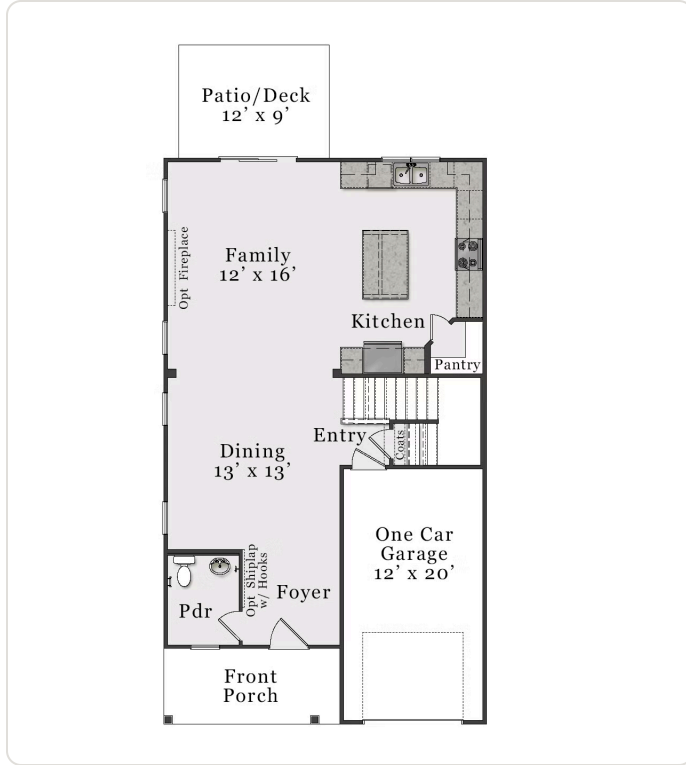
Erica Allen

Phone: (910) 261-0268

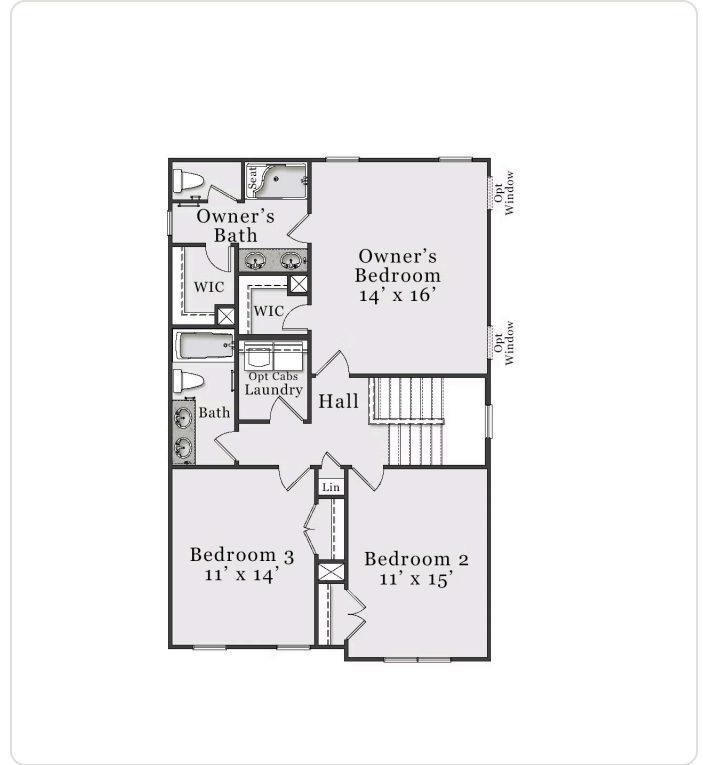
Email: eallen@mckeehomesnc.com

Plans and elevations are artist's renderings only and used for marketing purposes. Stated dimensions and square footage are approximate and should not be used as representation of the home's precise or actual size. McKee Homes reserves the right to make changes to these floor plans, specifications, dimensions, designs, features and elevations without prior notice. We may need to substitute equipment, materials and appliances with items of equal or higher value at our own discretion. Floor plans are the copyright protected property of McKee Homes. © 2026 McKee Homes. All rights reserved.

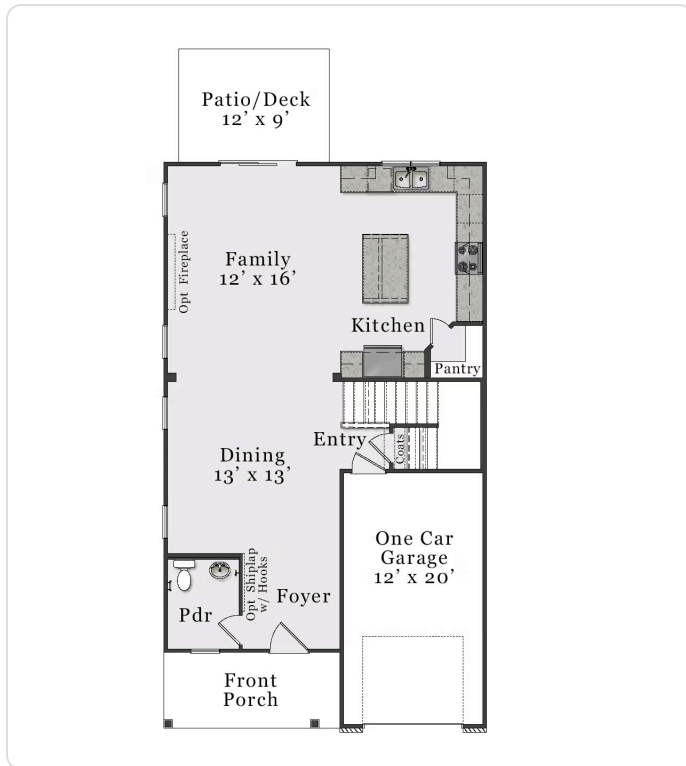




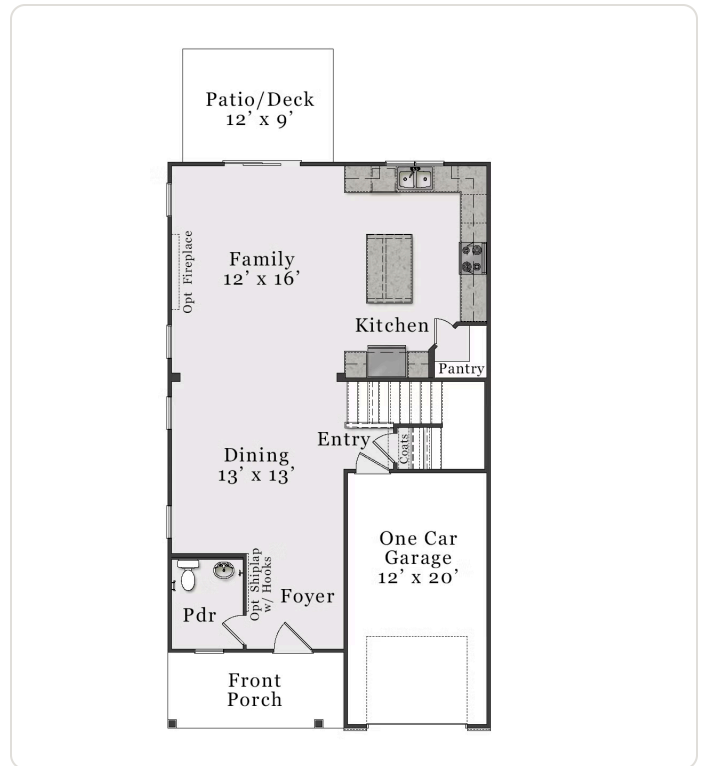
FIRST FLOOR A



SECOND FLOOR A & B



FIRST FLOOR B



FIRST FLOOR C