



FLOOR PLAN · RAEFORD, NC

Bowen

Built in Bedford

STARTING FROM

\$318,990

3

BED

2.5

BATH

2,186

SQ FT

2

GARAGE

PLAN DETAILS

COMMUNITY	Bedford
FLOORPLAN	Bowen
BEDROOMS	3
FULL BATHS	2
HALF BATHS	1
GARAGE	2 car
PRIMARY	Up

ABOUT THIS PLAN

The Bowen 3 bedroom, 2.5 bath floor plan is designed for open living. The first floor features a grand family room connected to an open dining area and versatile kitchen with substantial chef's island. The ample two-car garage has separate doors for each bay. As you ascend the stairway to the second floor, you enter a roomy open loft area with linen closet that separates the owner's suite from two additional bedrooms, both with walk-in closets. The owner's suite features a sizable bathroom with dual-sink vanity, shower, and separate water closet as well as a spacious walk-in closet that will fit both his and hers wardrobes. Options include additional windows in the secondary bedrooms as well as converting the rear patio/deck into a covered or screened porch. There is an extended patio/deck option that doubles the square footage of the rear patio/deck.



SALES CONSULTANT

Erica Allen

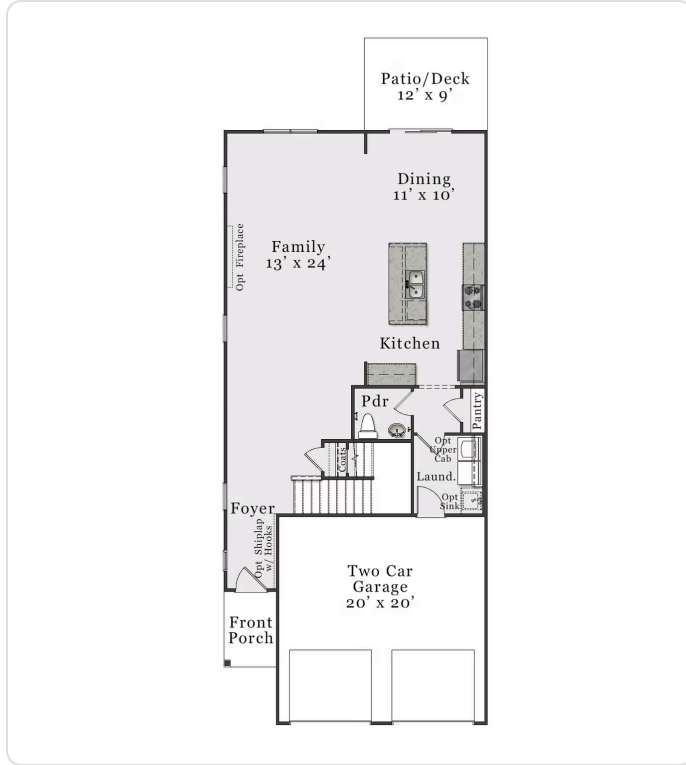
Phone: (910) 261-0268

Email: eallen@mckeehomesnc.com

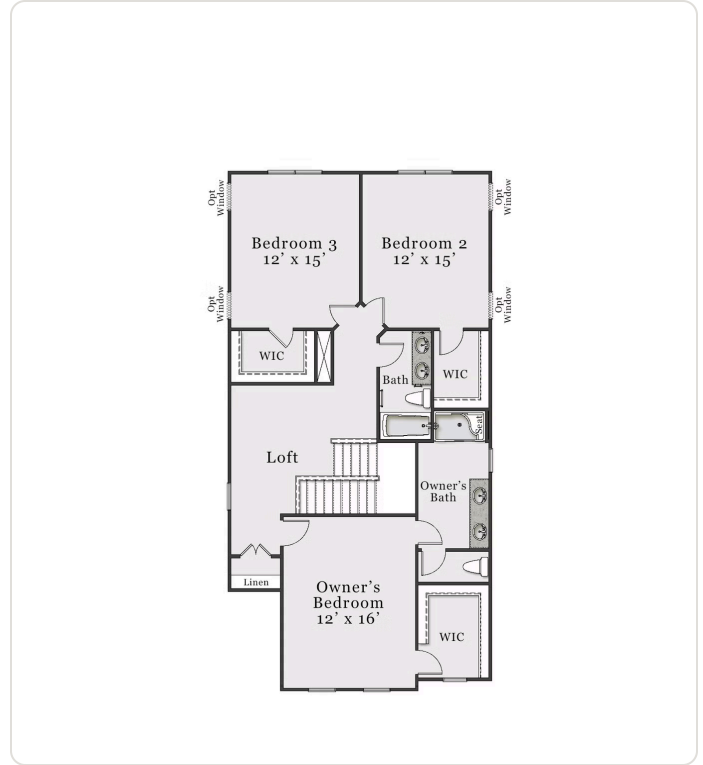
Plans and elevations are artist's renderings only and used for marketing purposes. Stated dimensions and square footage are approximate and should not be used as representation of the home's precise or actual size. McKee Homes reserves the right to make changes to these floor plans, specifications, dimensions, designs, features and elevations without prior notice. We may need to substitute equipment, materials and appliances with items of equal or higher value at our own discretion. Floor plans are the copyright protected property of McKee Homes. © 2026 McKee Homes. All rights reserved.

Generated on July 6, 2026

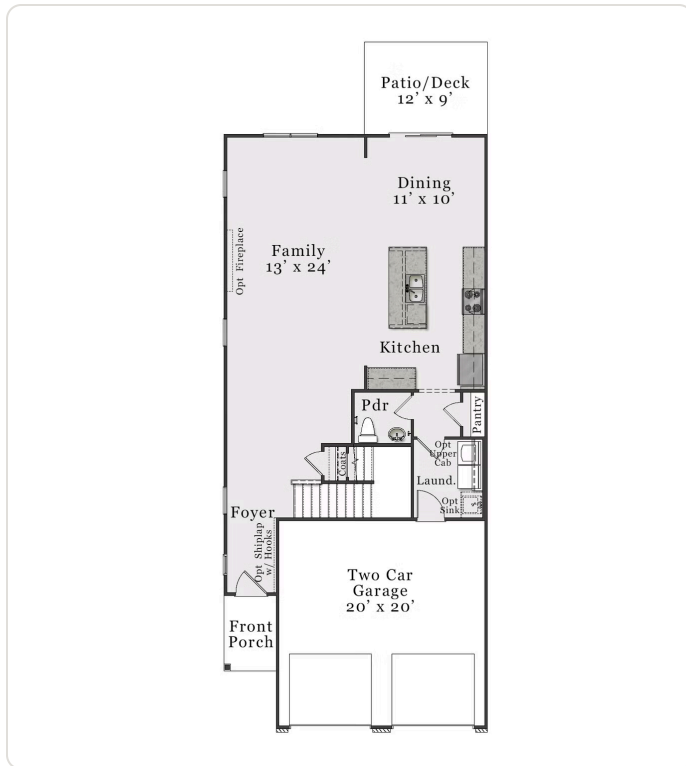




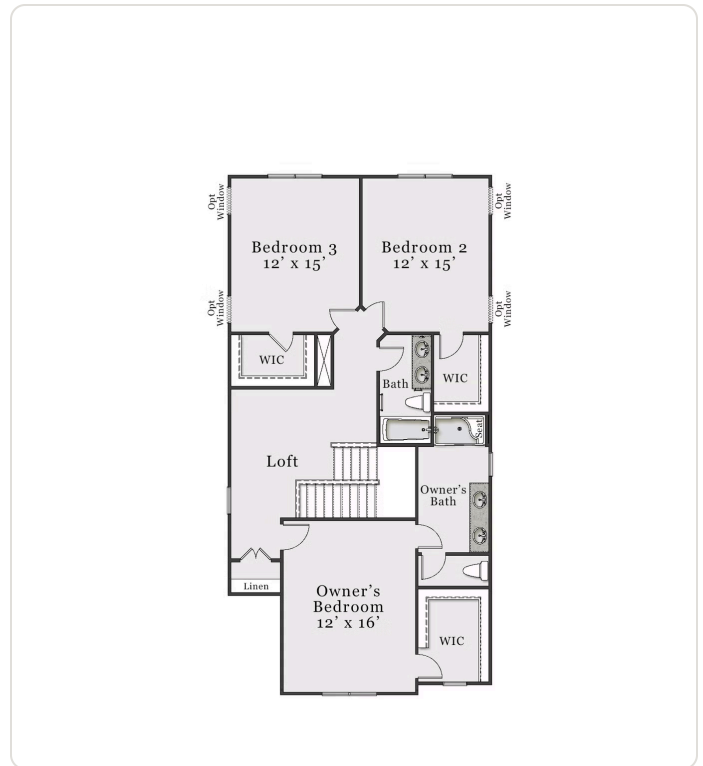
FIRST FLOOR A



SECOND FLOOR A



FIRST FLOOR B



SECOND FLOOR B