

FLOOR PLAN - BEDFORD, NC

Alexander

Built in Bedford



STARTING FROM

\$300,990

3 - 4

BED

2.5

BATH

1,760

SQ FT

2

GARAGE

PLAN DETAILS

COMMUNITY	Bedford
FLOORPLAN	Alexander
BEDROOMS	3-4
FULL BATHS	2
HALF BATHS	1
GARAGE	2 car
PRIMARY	Up

AVAILABLE ELEVATIONS



ABOUT THIS PLAN

Unwind in Style and Embrace Open Living in the Alexander a spacious open-concept layout, perfect for entertaining and fostering togetherness.

The main floor of the home features:

- A versatile kitchen: Boasting a substantial chef's island, this culinary haven inspires your inner chef.
- An open dining area: Unwind and connect with loved ones over meals in this bright and welcoming space.
- A grand family room: Create lasting memories in this inviting space, perfect for movie nights or game days.
- A powder room: Adds a touch of convenience on the main level.

Unwind and Recharge Upstairs:

- A roomy loft area: This flexible space can be used as a second living area, playroom, a home office or optional fourth bedroom.
- A luxurious primary suite: Your private sanctuary boasts a sizable bathroom with a dual-sink vanity, shower, and separate



SALES CONSULTANT

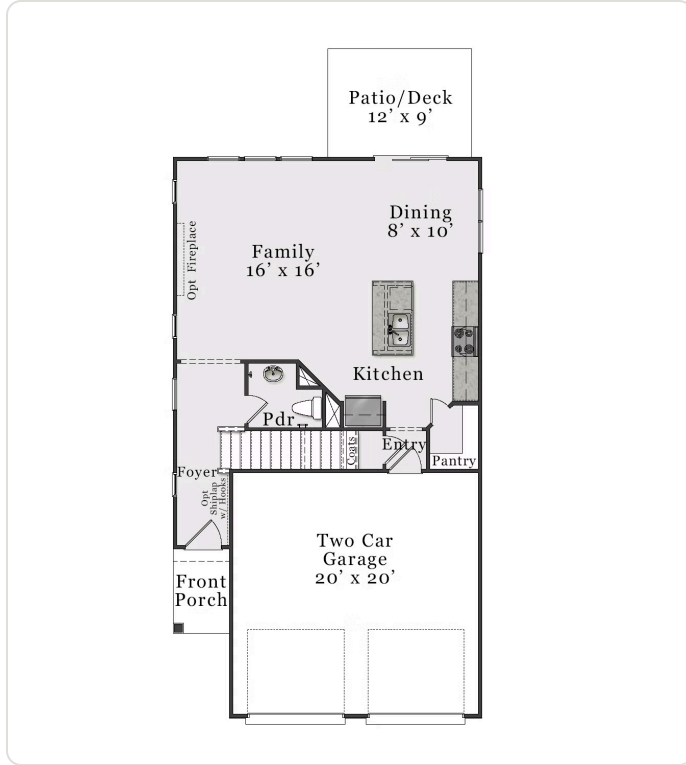
Erica Allen

Phone: (910) 261-0268

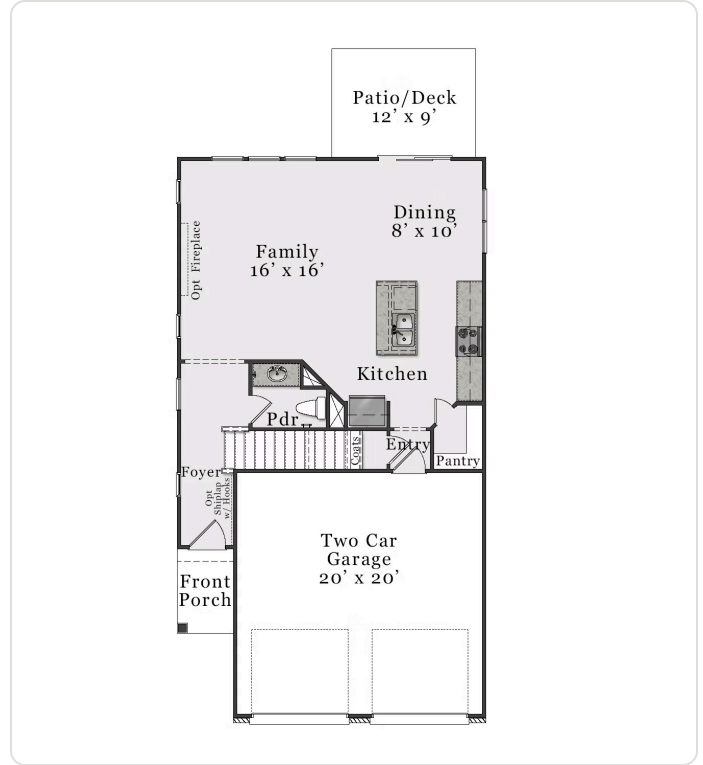
Email: eallen@mckeehomesnc.com

Plans and elevations are artist's renderings only and used for marketing purposes. Stated dimensions and square footage are approximate and should not be used as representation of the home's precise or actual size. McKee Homes reserves the right to make changes to these floor plans, specifications, dimensions, designs, features and elevations without prior notice. We may need to substitute equipment, materials and appliances with items of equal or higher value at our own discretion. Floor plans are the copyright protected property of McKee Homes. © 2026 McKee Homes. All rights reserved.

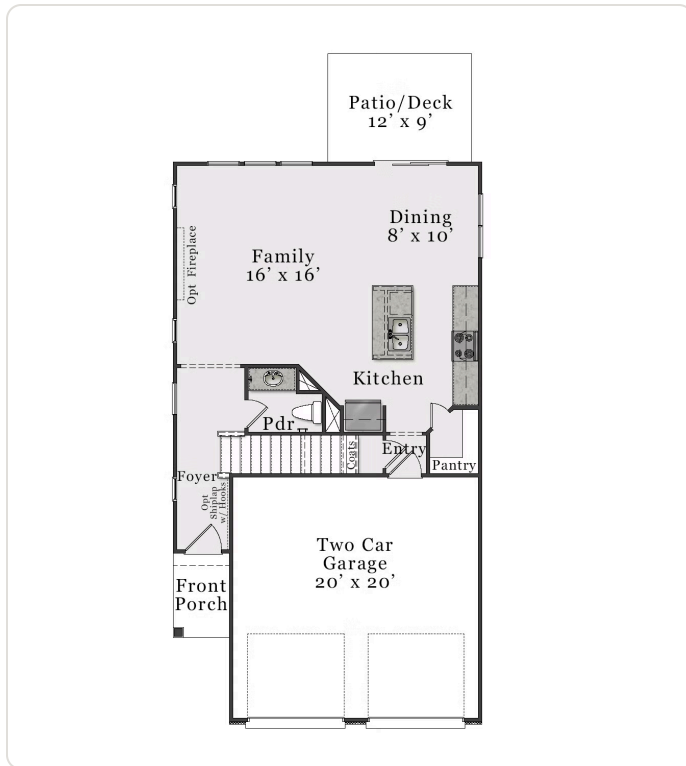




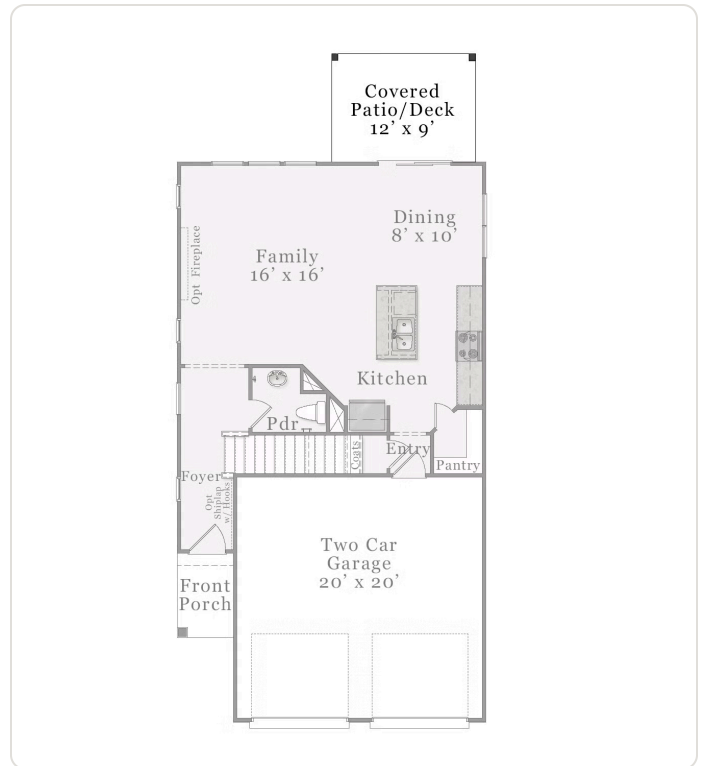
FIRST FLOOR A



FIRST FLOOR B



FIRST FLOOR C



OPTIONAL - COVERED DECK / PATIO