



FLOOR PLAN LELAND, NC

Max

Built in Coastal Haven Townes · 2 homes available now



STARTING FROM

\$289,990

2 - 3

BED

2.5

BATH

1,826

SQ FT

1

GARAGE

PLAN DETAILS

COMMUNITY	Coastal Haven Townes
FLOORPLAN	Max
BEDROOMS	2-3
FULL BATHS	2
HALF BATHS	1
GARAGE	1 car
PRIMARY	Up

ABOUT THIS PLAN

The Max features a spacious living room, breakfast nook, Kitchen combo perfect for relaxing or entertaining guests. The kitchen contains ample counter space, and a kitchen island for additional prep area or seating. Flowing out from the living room is a large patio, perfect for taking in that coastal air. On the second floor you are greeted with 2-3 spacious bedrooms with walk in closets. The primary bedroom includes an attached bathroom with a dual vanity and walk-in shower.

ADDITIONAL ELEVATIONS



SALES CONSULTANT

Daniel Turner

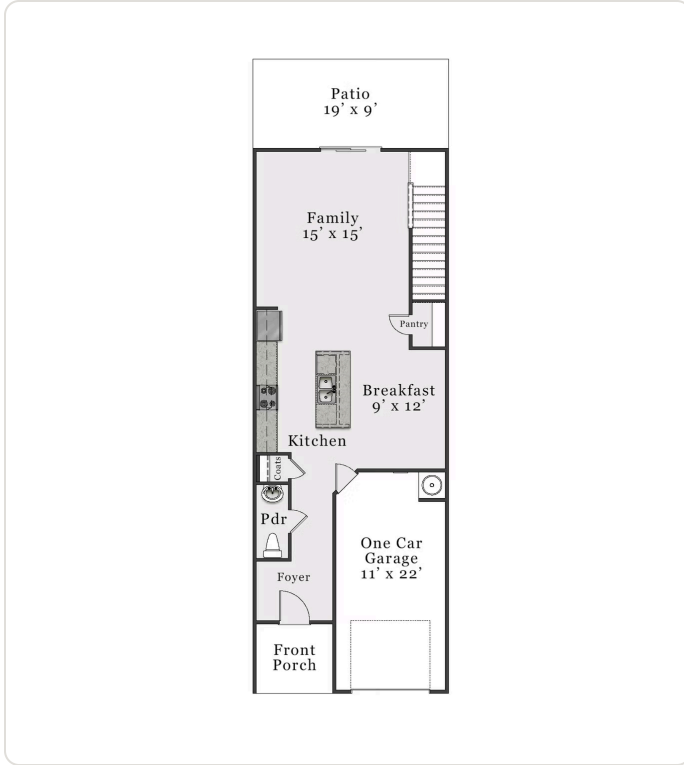
Phone: (910) 795-6645

Email: dturner@mckeehomesnc.com

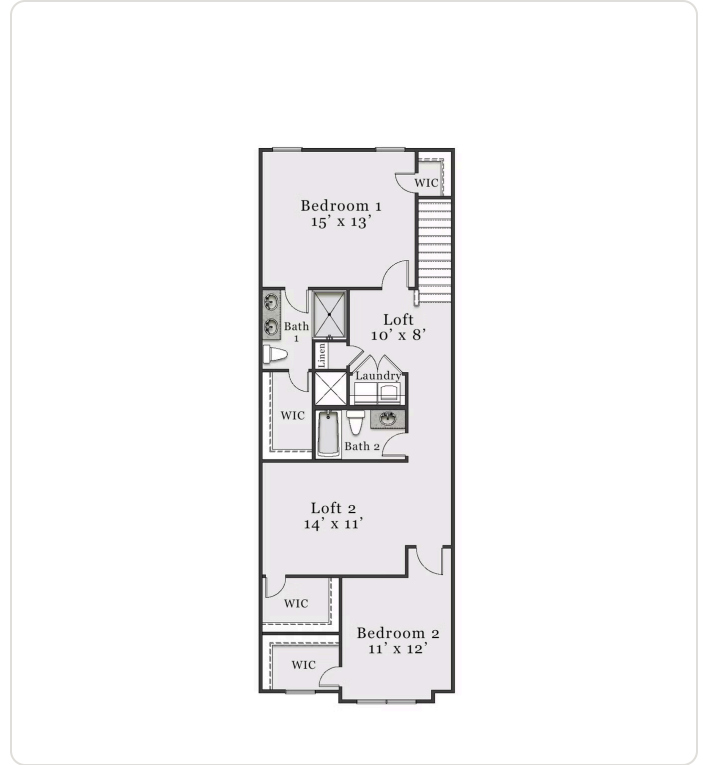
Plans and elevations are artist's renderings only and used for marketing purposes. Stated dimensions and square footage are approximate and should not be used as representation of the home's precise or actual size. McKee Homes reserves the right to make changes to these floor plans, specifications, dimensions, designs, features and elevations without prior notice. We may need to substitute equipment, materials and appliances with items of equal or higher value at our own discretion. Floor plans are the copyright protected property of McKee Homes. © 2026 McKee Homes. All rights reserved.

Generated on June 27, 2026

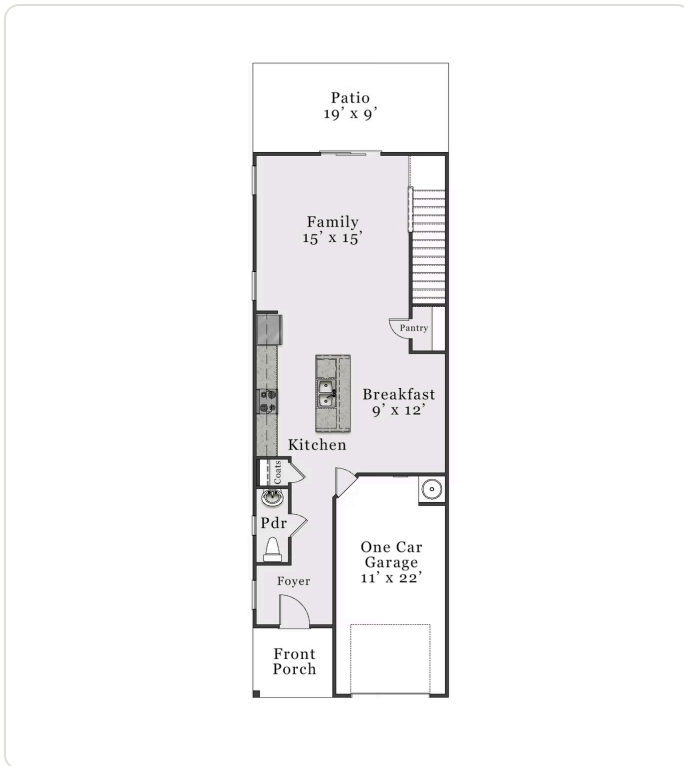




INTERIOR FIRST FLOOR



INTERIOR SECOND FLOOR



END FIRST FLOOR



END SECOND FLOOR