



FLOOR PLAN · BOLIVIA, NC

Graham

Built in Fords Reach · 2 homes available now

STARTING FROM

\$299,990

2

BED

2

BATH

1,368

SQ FT

2

GARAGE

PLAN DETAILS

COMMUNITY	Fords Reach
FLOORPLAN	Graham
BEDROOMS	2
FULL BATHS	2
GARAGE	2 car
PRIMARY	Up

ABOUT THIS PLAN

The Graham floor plan by McKee Homes offers a thoughtfully designed layout that blends comfort, simplicity, and everyday functionality. Featuring **2 bedrooms, 2 bathrooms, and a spacious 2-car garage**, this plan is ideal for those seeking easy, low-maintenance living without sacrificing style.

The open-concept design creates a natural flow between the kitchen, dining, and living areas—perfect for both relaxing and entertaining. A well-appointed kitchen anchors the home, while the primary suite provides a private retreat with a spacious layout designed for comfort and convenience.

With smart use of space and flexible living areas, the Barton delivers a balance of efficiency and livability, making it a great fit for active adult lifestyles or anyone looking to simplify without compromise. Thoughtful details and quality craftsmanship throughout offer you a home built for the way you live today.



SALES CONSULTANT

Kristen Ohler

Phone: (910) 612-1999

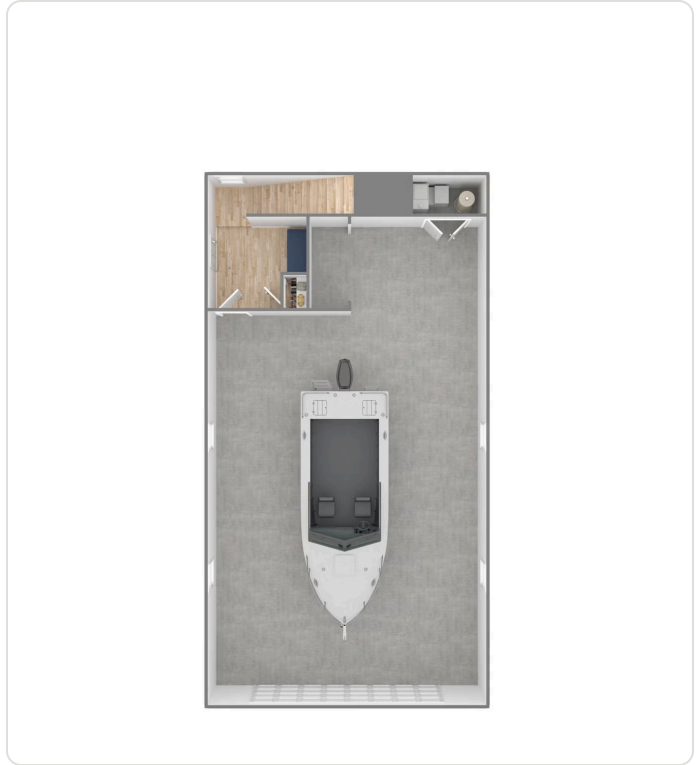
Email: kohler@mckeehomesnc.com

Plans and elevations are artist's renderings only and used for marketing purposes. Stated dimensions and square footage are approximate and should not be used as representation of the home's precise or actual size. McKee Homes reserves the right to make changes to these floor plans, specifications, dimensions, designs, features and elevations without prior notice. We may need to substitute equipment, materials and appliances with items of equal or higher value at our own discretion. Floor plans are the copyright protected property of McKee Homes. © 2026 McKee Homes. All rights reserved.

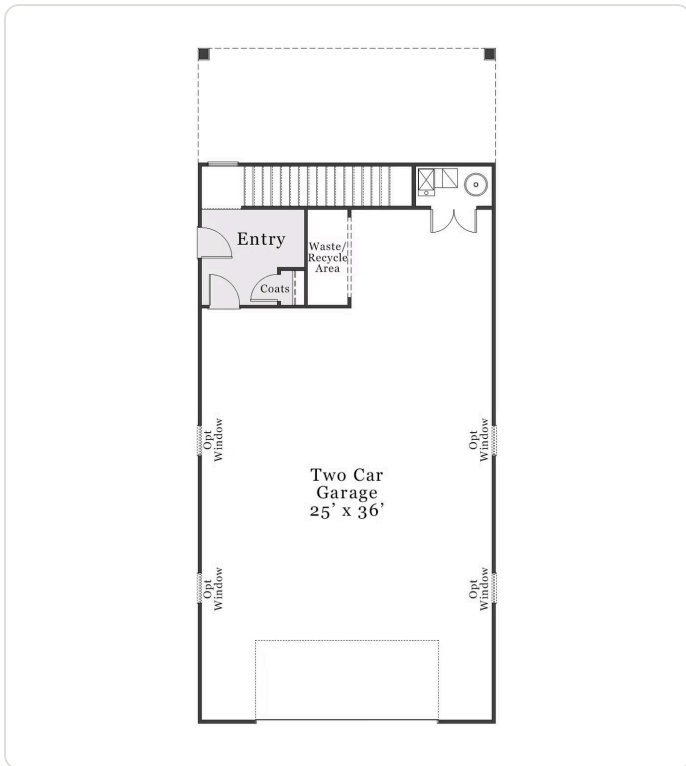




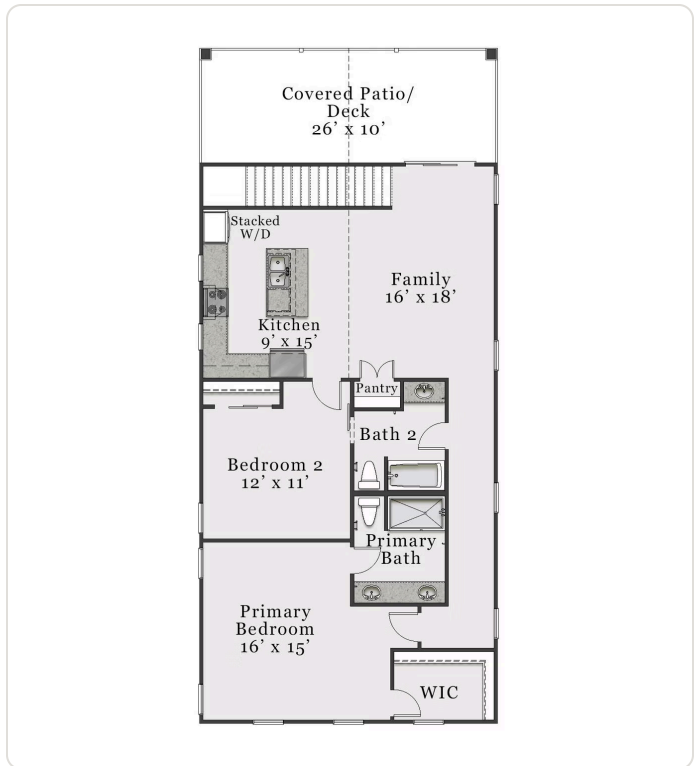
FLOOR PLAN



FLOOR PLAN



FLOOR PLAN



FLOOR PLAN