



# THE RIDDICK



## CRAFTSMAN KS ELEVATION

**SQUARE FEET: 3,100 TO 3,200**

**BEDROOMS: 4 TO 5**

**BATHROOMS: 2.5 TO 3.5**



Single Door Garage



**McKee HOMES**

**101 HAY STREET • FAYETTEVILLE, NC 28301**

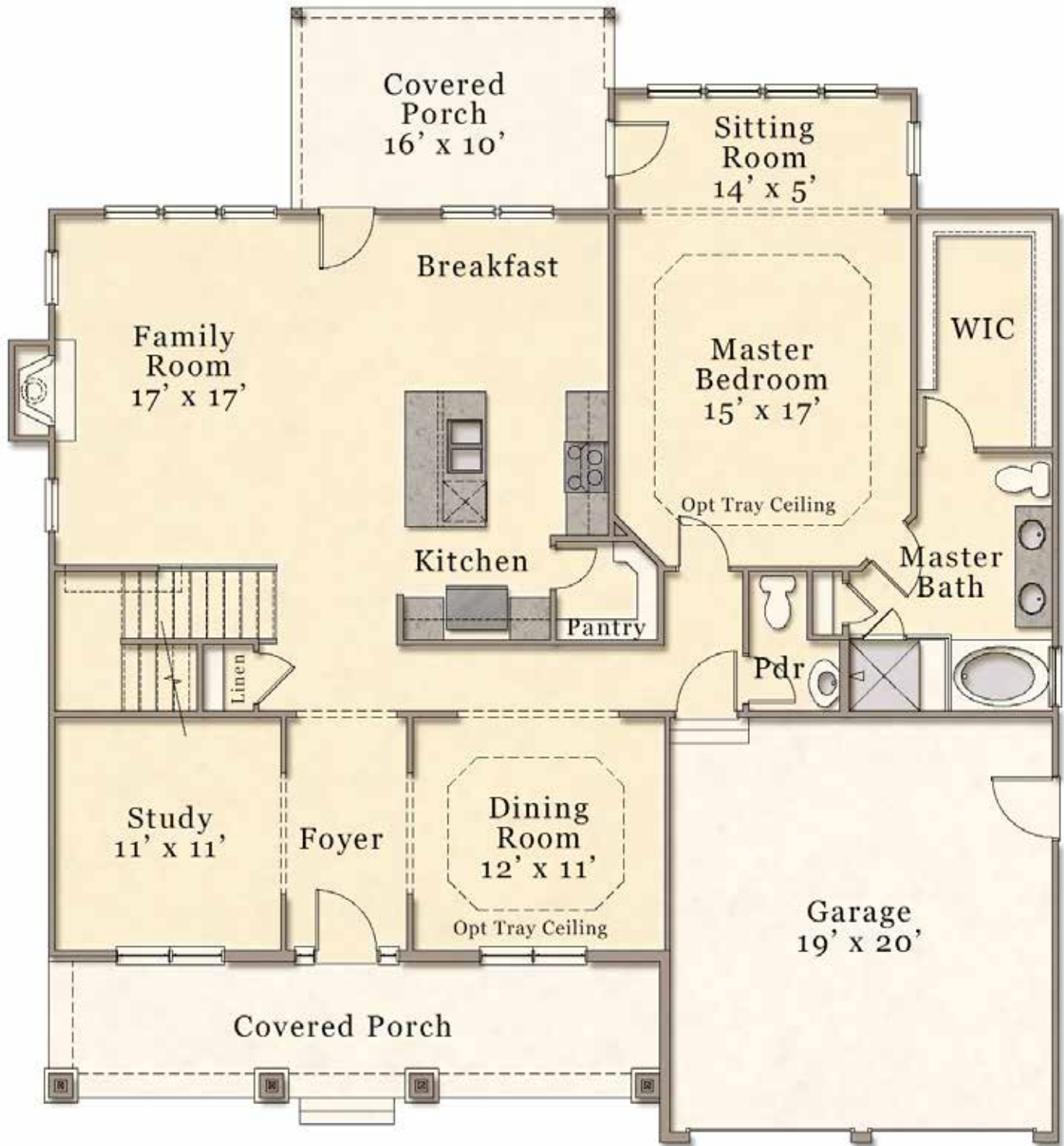
**SALES: 910-672-7296 • MAIN OFFICE: 910-475-7100**

**SALES@MCKEEHOMESNC.COM • WWW.MCKEEHOMESNC.COM**

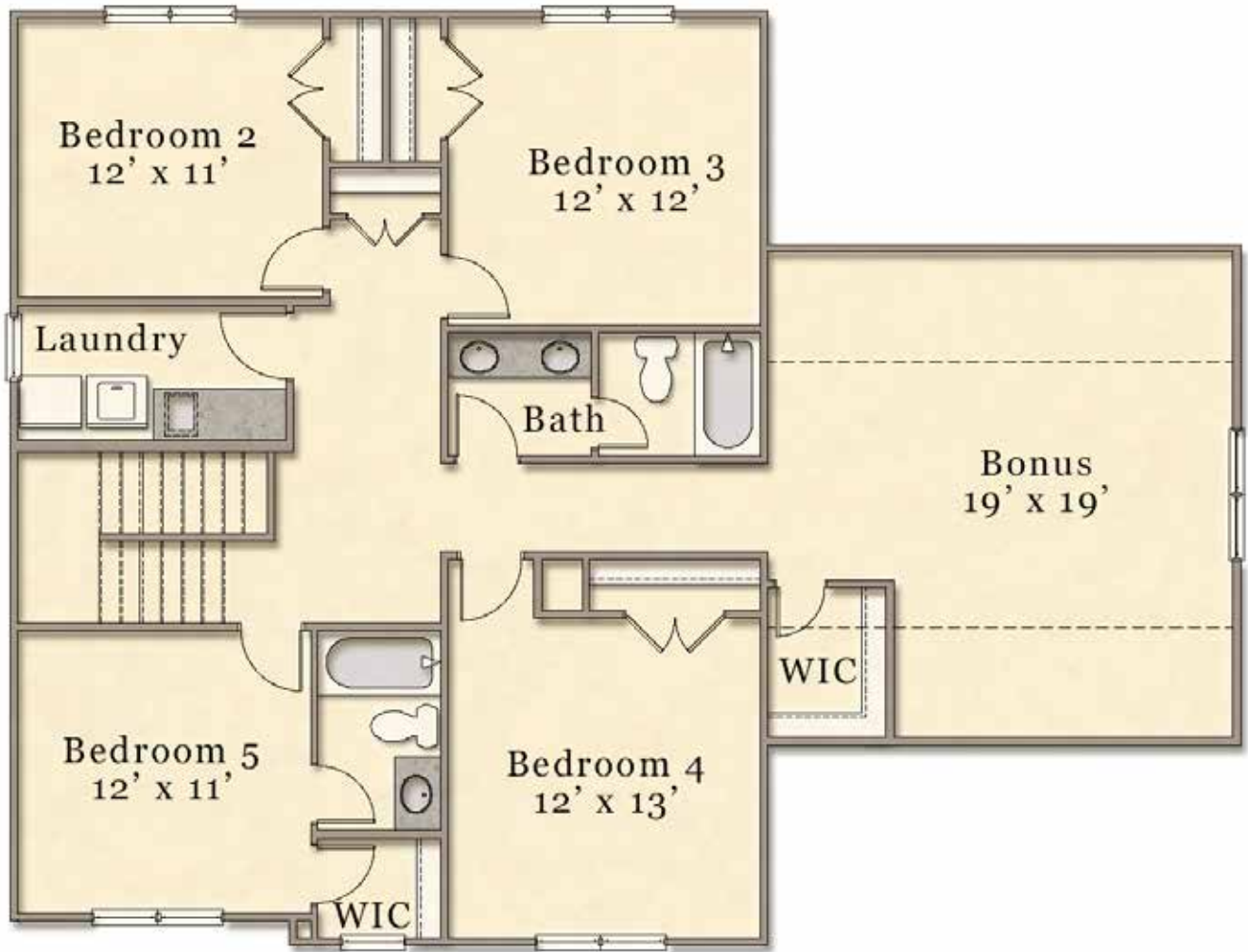


These plans are for marketing purposes only. Square footage and dimensions may vary and are not guaranteed. Specific features and options vary from home to home and from one community to another. We reserve the right to substitute equipment, materials and appliances with items of equal or higher value at our own discretion. Floor plans are the copyright protected property of McKee Homes. © 2014 McKee Homes. All rights reserved.

FIRST FLOOR  
Approx. 1,600 Sq. Ft.



SECOND FLOOR  
Approx. 1,500 Sq. Ft.



# OPTIONAL SINGLE DOOR GARAGE

