



THE RIDDICK



CRAFTSMAN ELEVATION

SQUARE FEET: 3,100 TO 3,200

BEDROOMS: 4 TO 5

BATHROOMS: 2.5 TO 3.5



McKee HOMES

101 HAY STREET • FAYETTEVILLE, NC 28301

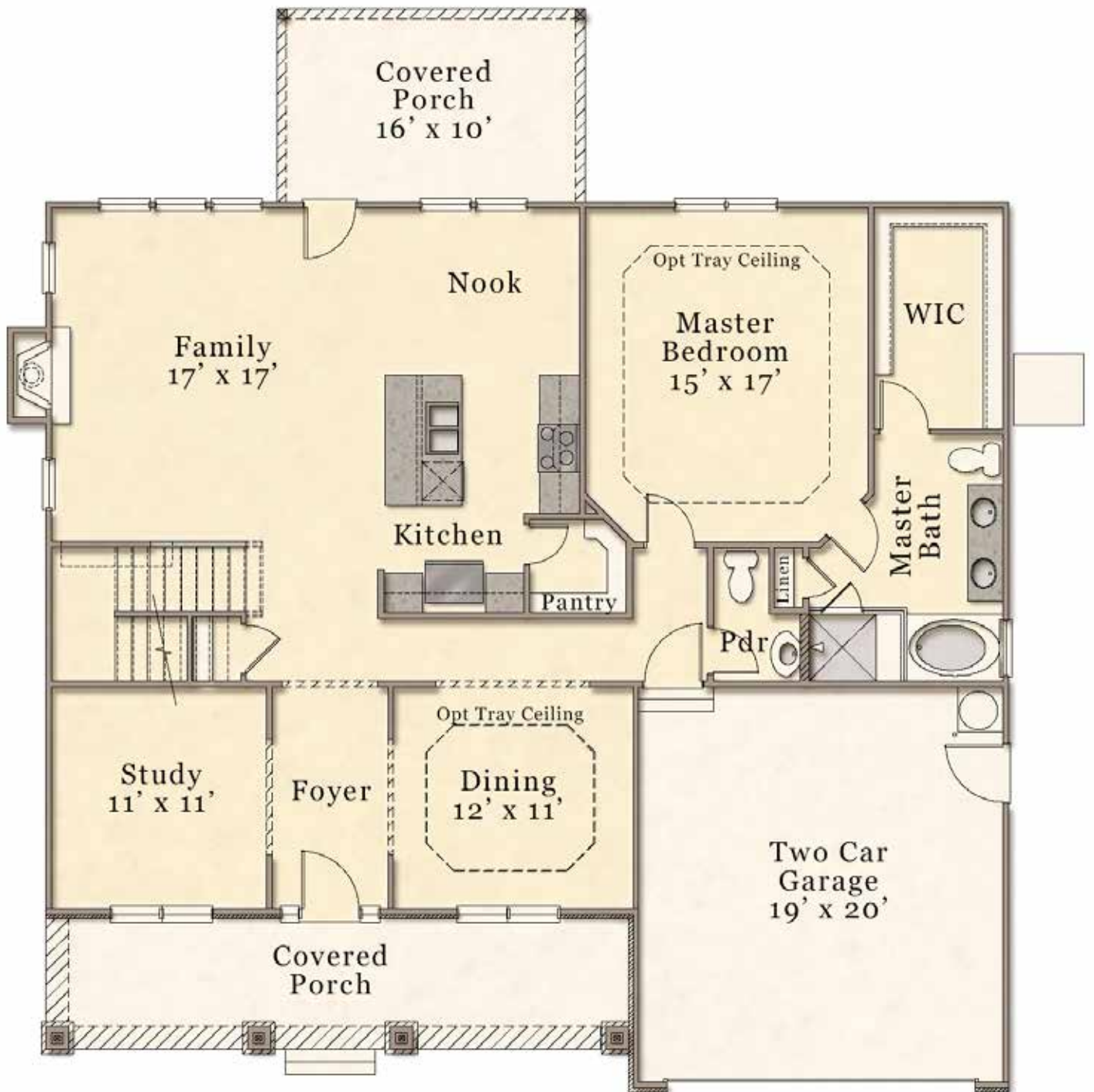
SALES: 910-672-7296 • MAIN OFFICE: 910-475-7100

SALES@MCKEEHOMESNC.COM • WWW.MCKEEHOMESNC.COM

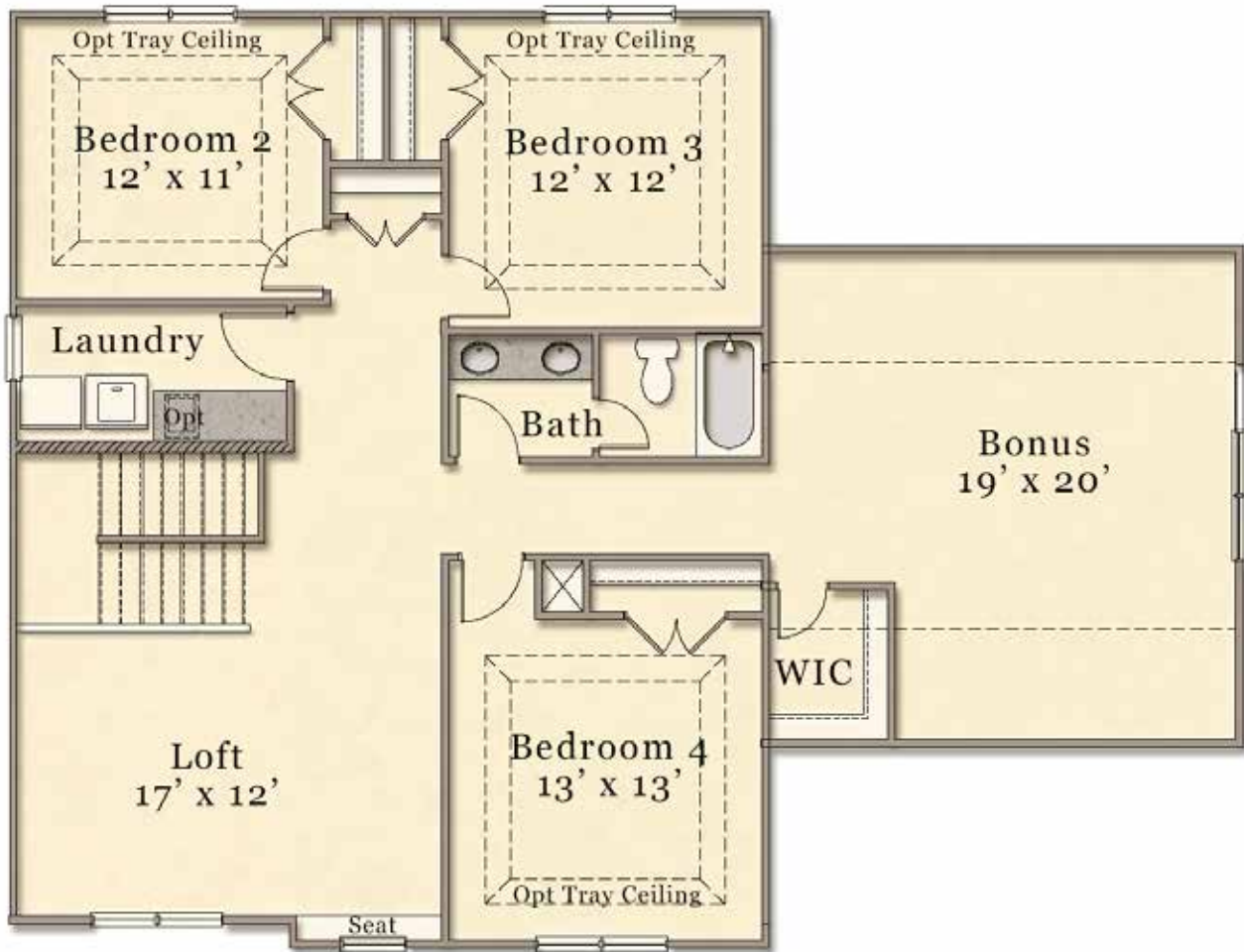


These plans are for marketing purposes only. Square footage and dimensions may vary and are not guaranteed. Specific features and options vary from home to home and from one community to another. We reserve the right to substitute equipment, materials and appliances with items of equal or higher value at our own discretion. Floor plans are the copyright protected property of McKee Homes. © 2014 McKee Homes. All rights reserved.

FIRST FLOOR
Approx. 1,600 Sq. Ft.



SECOND FLOOR
Approx. 1,500 Sq. Ft.



OPTIONS: SITTING ROOM & FRENCH DOORS AT STUDY
Approx. 90 Sq. Ft.



OPTIONS: BEDROOM #5 WITH FULL BATH

