



THE PROMENADE



EPCON COLLECTION

SQUARE FEET: 2,020 TO 2,875

BEDROOMS: 2 TO 3

BATHROOMS: 2 TO 3



Promenade with Bonus



McKee Homes
109 Hay Street, Suite 301 • Fayetteville, NC 28301
Sales: 910-672-7296 • Main Office: 910-475-7100
sales@mckeehomesnc.com • www.McKeeHomesNC.com



These plans are for marketing purposes only. Square footage and dimensions may vary and are not guaranteed. Specific features and options vary from home to home and from one community to another. We reserve the right to substitute equipment, materials and appliances with items of equal or higher value at our own discretion. Floor plans are the copyright protected property of McKee Homes. © 2016 McKee Homes. All rights reserved.

FIRST FLOOR
 Approx. 2,020 Sq. Ft.
 Optional Sitting Room: Approx. 95 Sq. Ft.
 Optional 4-Seasons Room in Place of Den



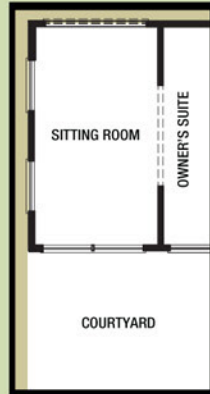
Promenade

Approximate Room Dimensions

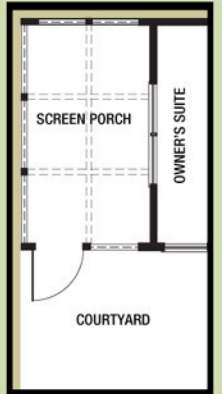
Living Room	17' x 19'
Kitchen	14' x 19'
Dining Room	14' x 20'
Owner's Suite	13' x 14'
Owner's Bath	13' x 11'
Bedroom 2	13' x 11'
Den/Office	12' x 11'
Garage	21' x 22'

Options

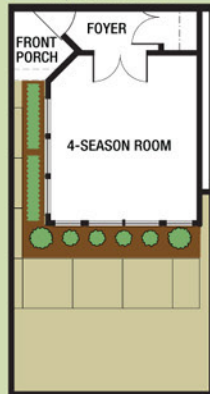
7' x 13' Sitting Room



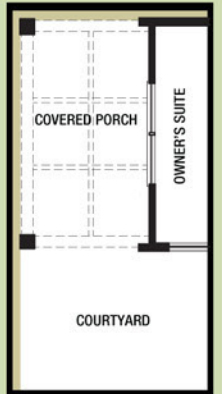
7' x 13' Screen Porch



4-Season Room in place of Den

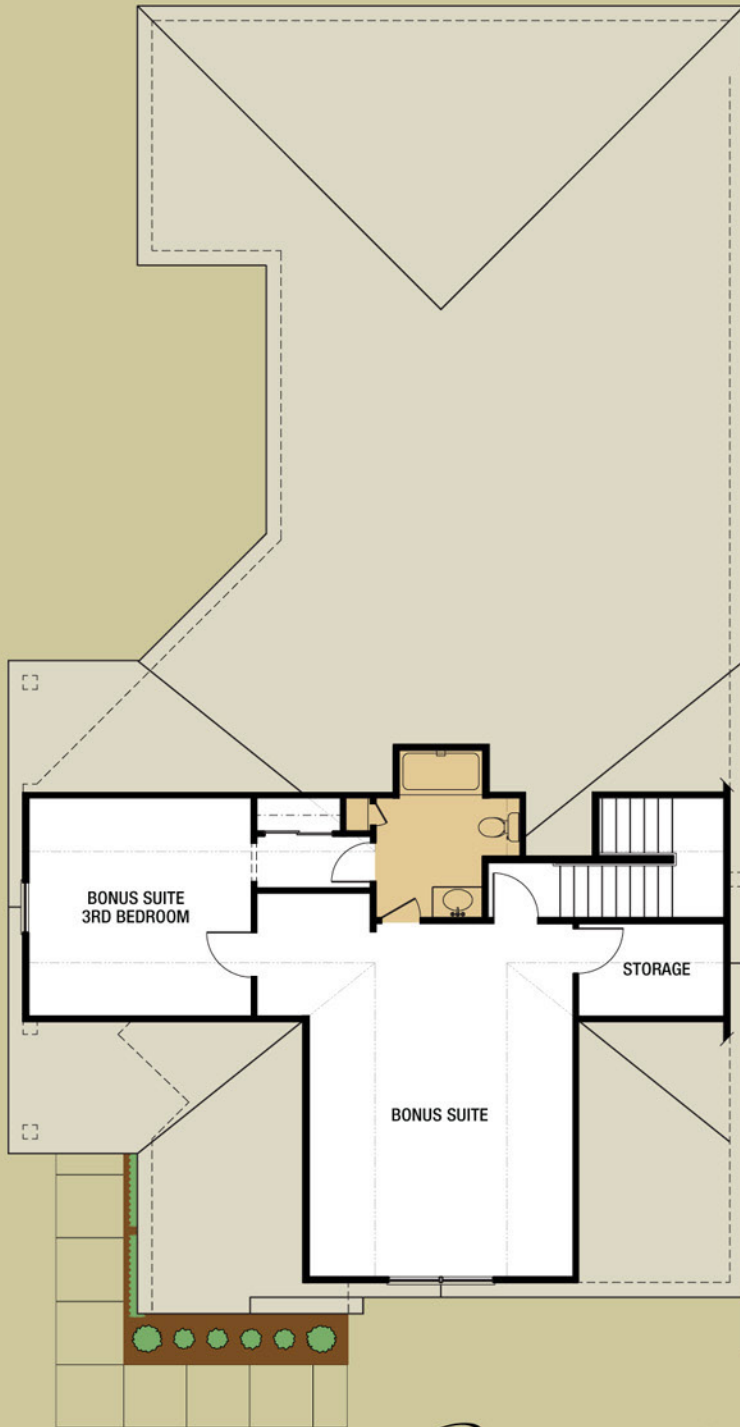


7' x 13' Covered Porch



OPTIONAL SECOND FLOOR

Approx. 760 Sq. Ft.

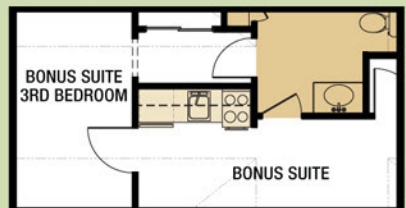


Approximate Room Dimensions

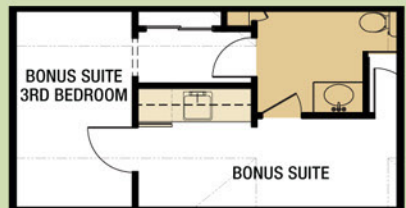
3rd Bedroom	13' x 13'
Bonus Suite	21' x 15'
Kitchenette	8' x 2'
Bath	9' x 9'
Storage	6' x 9'

Options

Kitchenette



Wetbar



Promenade