



THE DANIELS



CLASSIC COLLECTION

SQUARE FEET: 1,792

BEDROOMS: 3

BATHROOMS: 2.5



Side Load Garage

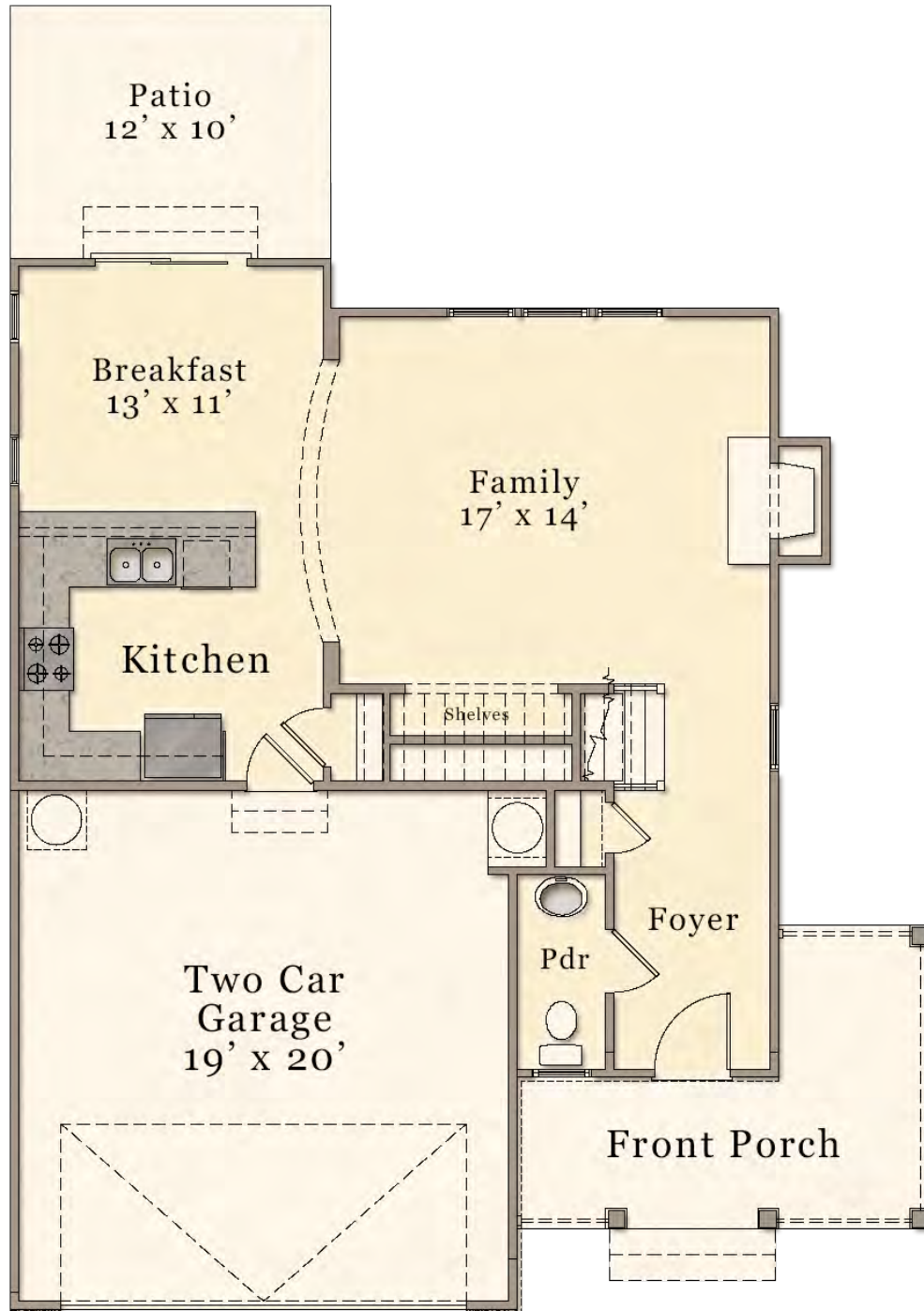


McKee Homes
109 Hay Street, Suite 301 • Fayetteville, NC 28301
Sales: 910-672-7296 • Main Office: 910-475-7100
sales@mckeehomesnc.com • www.McKeeHomesNC.com

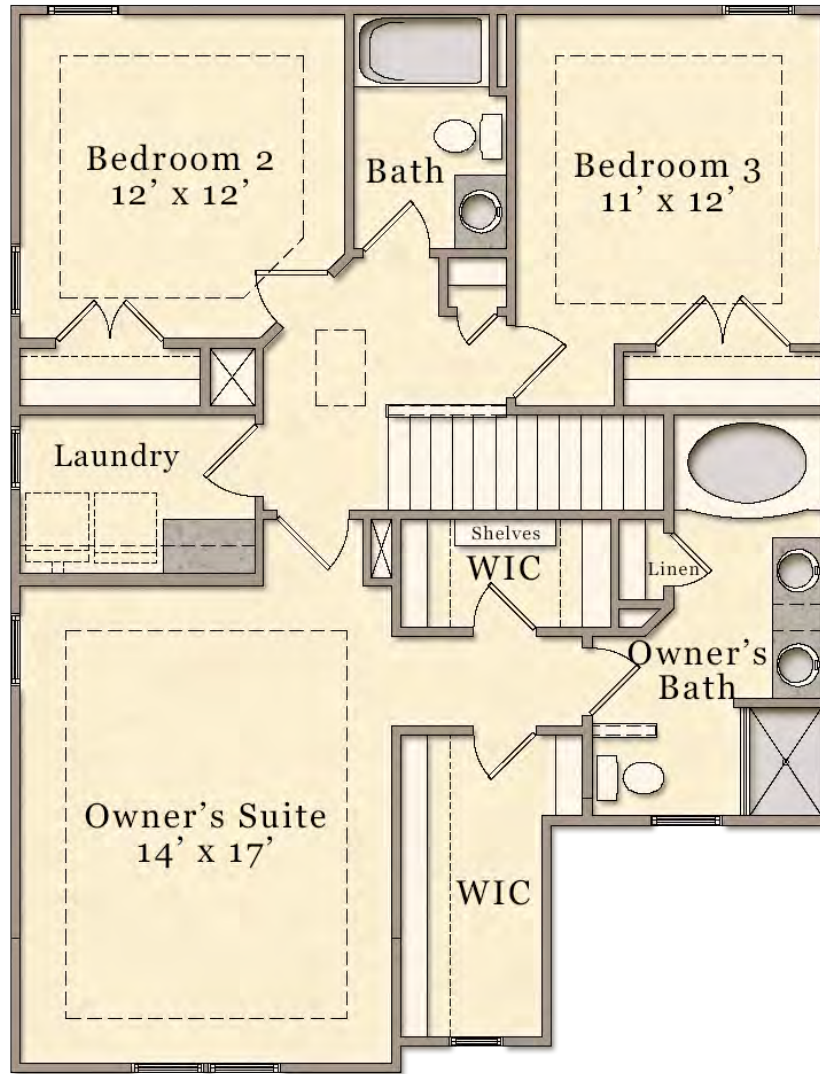


These plans are for marketing purposes only. Square footage and dimensions may vary and are not guaranteed. Specific features and options vary from home to home and from one community to another. We reserve the right to substitute equipment, materials and appliances with items of equal or higher value at our own discretion. Floor plans are the copyright protected property of McKee Homes. © 2017 McKee Homes. All rights reserved.

FIRST FLOOR
Approx. 728 Sq. Ft.

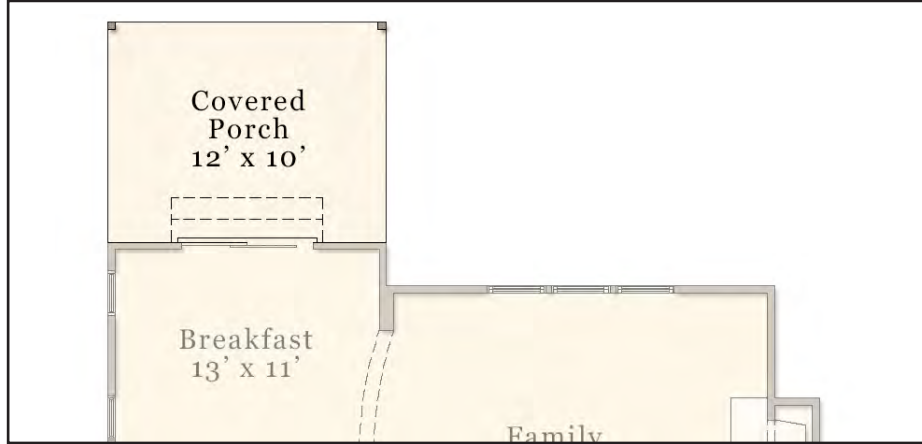


SECOND FLOOR
Approx. 1,064 Sq. Ft.

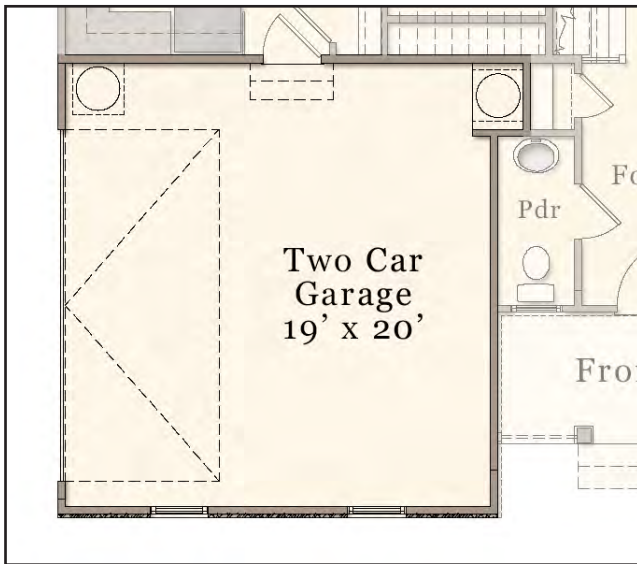


FIRST FLOOR OPTIONS

Covered Porch



Side Load Garage



Flush Front Porch

